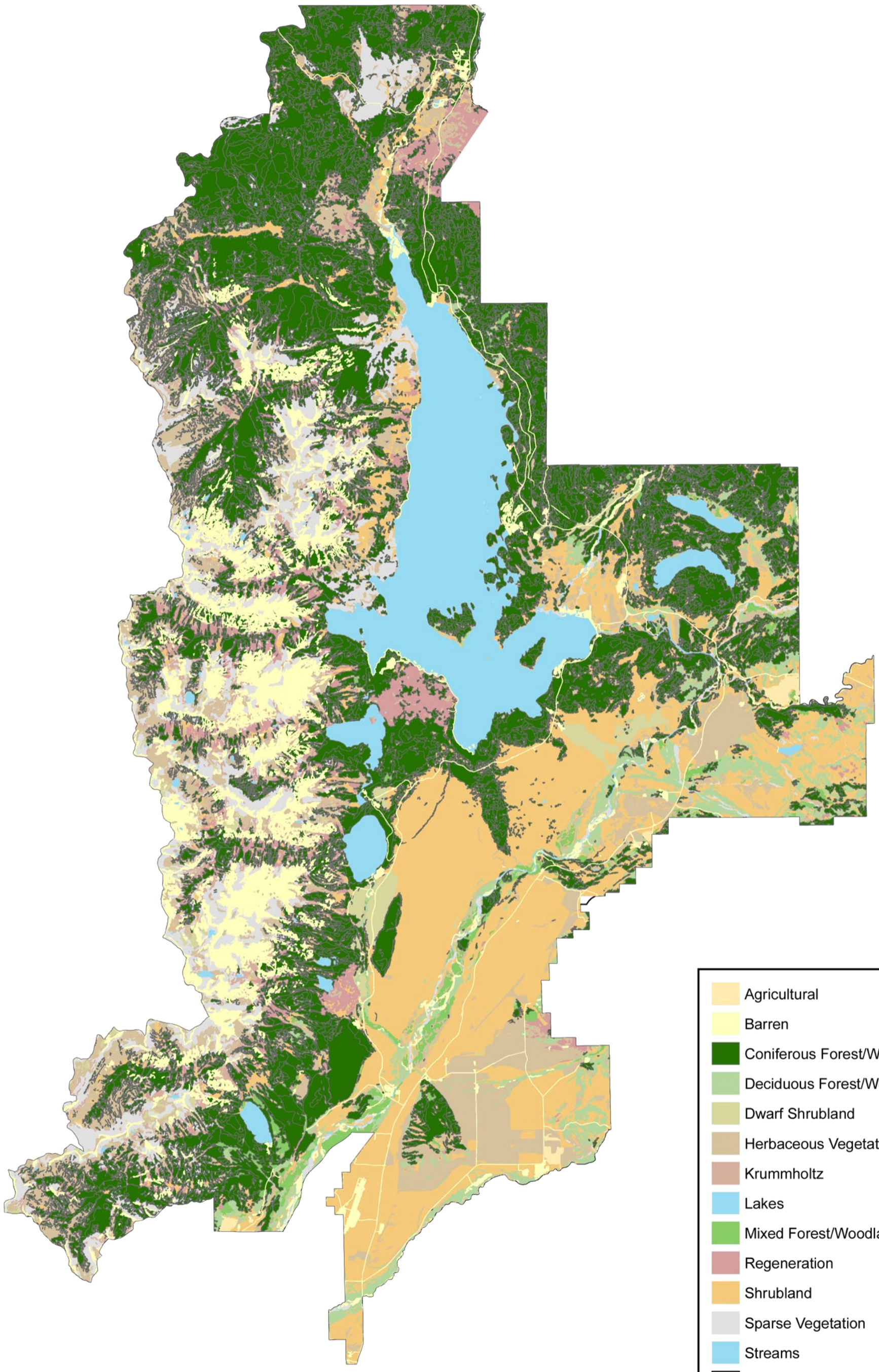




Grand Teton National Park with merged physio layers



- Agricultural
- Barren
- Coniferous Forest/Woodland
- Deciduous Forest/Woodland
- Dwarf Shrubland
- Herbaceous Vegetation
- Krummholtz
- Lakes
- Mixed Forest/Woodland
- Regeneration
- Shrubland
- Sparse Vegetation
- Streams
- GRTE Boundary

